

# TUBULAR DRAG CONVEYOR

## A GENTLE, EFFICIENT TRANSPORT SOLUTION

### 01 Move Challenging Materials.

Convey high-moisture, abrasive, blended, friable, easy-to-compact, large particle, or materials that smear without compromising quality.

### 02 Zero Emission.

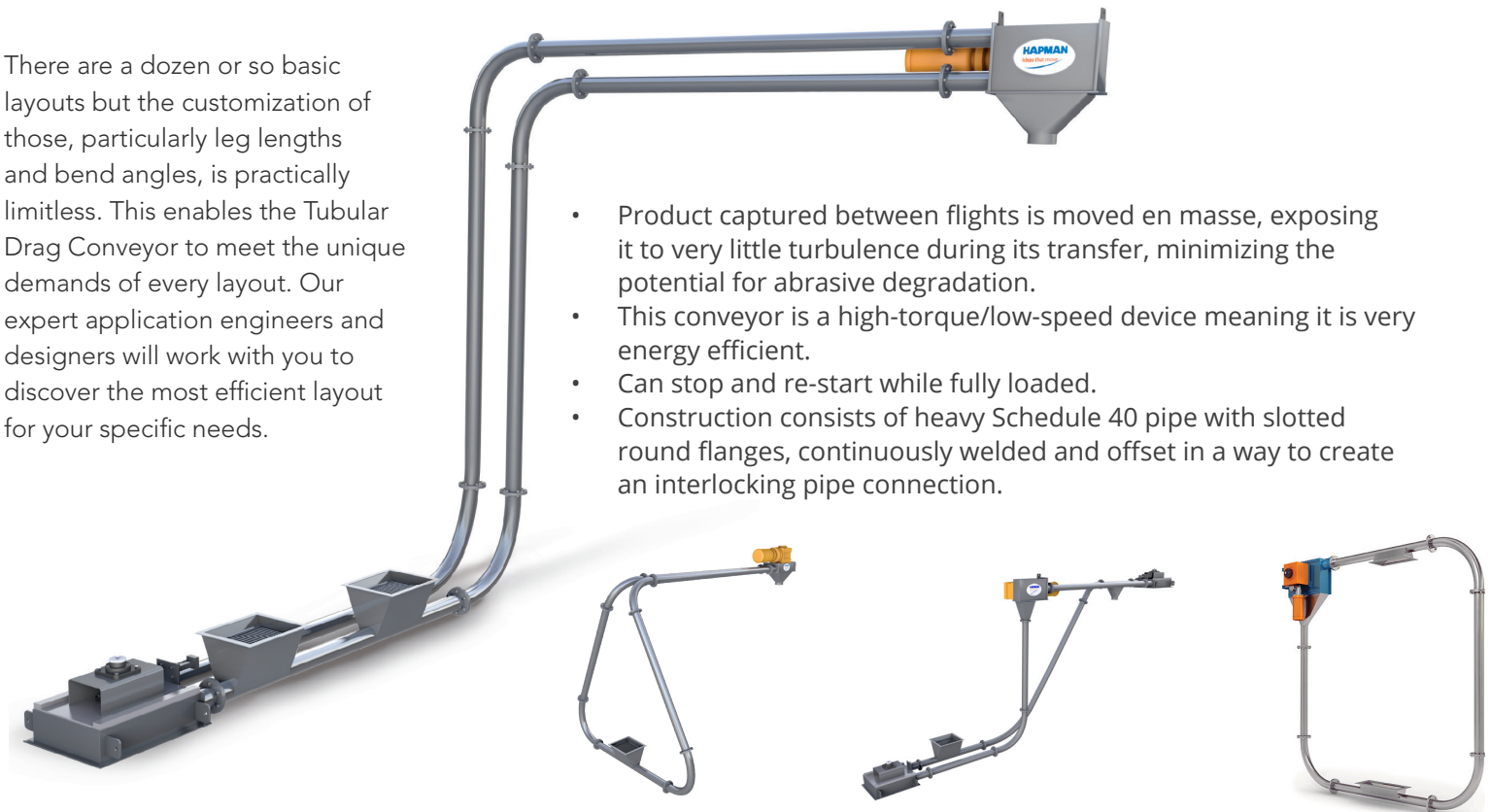
The totally enclosed, dust-tight design makes it an obvious candidate for handling and containing dusty, smelly, toxic, or even hazardous materials.

### 03 Streamline Operations.

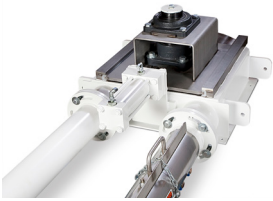
Seamlessly move your product vertically, horizontally, at any angle, and even around corners. Effortlessly configure inlets and outlets wherever necessary.

There are a dozen or so basic layouts but the customization of those, particularly leg lengths and bend angles, is practically limitless. This enables the Tubular Drag Conveyor to meet the unique demands of every layout. Our expert application engineers and designers will work with you to discover the most efficient layout for your specific needs.

- Product captured between flights is moved en masse, exposing it to very little turbulence during its transfer, minimizing the potential for abrasive degradation.
- This conveyor is a high-torque/low-speed device meaning it is very energy efficient.
- Can stop and re-start while fully loaded.
- Construction consists of heavy Schedule 40 pipe with slotted round flanges, continuously welded and offset in a way to create an interlocking pipe connection.

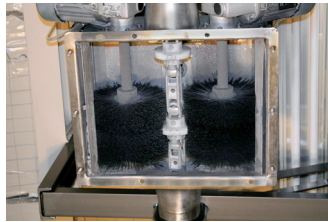


## Options



### Auto Tensioner

Built-in sensors automatically keep the chain at optimum performance, even under varying loads.



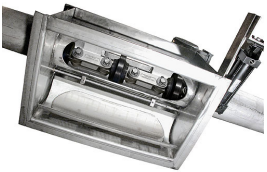
### Brush Box

Effectively removes stuck material from flights and chain with dual spinning brushes that prevent carryover, and facilitate full material discharge from conveyor.



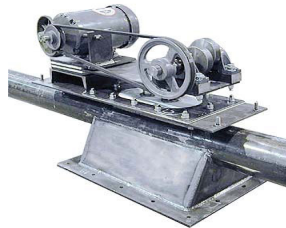
### Multiple Chain & Flight Options

Offering link and pin type chains, which are less prone to fatigue and wear, and stretch less than steel cables. Also available are Hapman's exclusive rivetless and seal-pin chain options to fit a wider array of applications.



### Self-Cleaning Discharge Gate

Opens and closes in position to allow full discharge of material, preventing material from getting trapped.



### Vibrating Hammer

Can be strategically located in the conveyor discharge points to free material that would otherwise cling to the chain flights.

Ask about our material testing!

Hapman offers a complete line of material handling equipment that easily integrates into existing systems, including:

- Flexible Screw Conveyors
- Tubular Drag Conveyors
- Vacuum Conveyors
- Feeders
- Bulk Bag Unloaders
- Bulk Bag Fillers
- Bag Dump Stations
- Lump Breakers
- And More

Distributed by: Bulk Process Equipment, Inc.



763-444-8333  
info@bpeinc.net

www.bpeinc.net



# HAPMAN

Ideas that move.



sales@hapman.com  
www.hapman.com



5944 East N Avenue  
Kalamazoo, MI 49048  
(800) 427-6260

