

Slide Gates Series E

TPS



TUBE & PIPE STUBS [TPS]

LSP



LIGHTWEIGHT STUD PATTERN [LSP]

Standard Features

- Shut off dry bulk conveying lines under vacuum, pressure (dilute phase 15 psi max) or gravity
- Unobstructed flow improves system performance and eliminates product degradation
- Install horizontally or vertically allowing simple system design (vacuum or pressure lines only)
- Positive Blade Lock (PBL) between blade & cylinder rod
- Internal magnetic piston, cushioned air cylinder
- Polished Stainless Steel blade
- Active Compression Seals (ACS)
- Light weight Aluminum body construction
- Temperature rated for up to 82° C (180° F)
- Inlet/Outlet Aluminum, Carbon Steel or Stainless Steel 16, 14 & 11 gauge, schedule 10, 40 & 80
- Fully tested prior to shipping

Options

- Position switches 5 volt to 240 volt AC/DC
- Special Seal Configurations
- Proximity Switches
- Oversized cylinders
- Double Acting or Single Acting Spring Return Solenoid (110 volt AC or 24 volt DC) or Manual Lever Valve
- Valve body sealed for air purging when conveying powders
- High temperature modifications
- NEMA 7-9 hazardous locations
- Manual Hand Crank, Hand Wheel or Chain Wheel Operation
- Electric Actuation
- Special Service Inlet
- Pre-wired Terminal Boxes
- Mufflers (Flow Control or Quick Exhaust)
- Vented Ball Valve (safety feature)
- Filter/Regulator/Lubricator
- Variable/Infinite Position Controls

Slide Gates

TPS/LSP

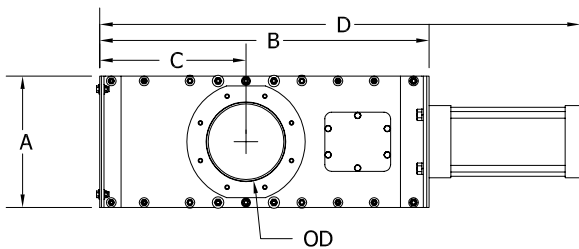
TPS OD	A	B	C	D	E (Qty) x 5/16-18 (LSP)	F	G - TPS
1.50"	5.00	11.75	4.69	17.97	4.0	3.88	8.06
2.00"	5.00	11.72	4.69	17.97	4.0	3.88	8.06
2.25"	6.00	14.47	5.75	21.72	4.0	3.88	8.06
2.38"	6.00	14.47	5.75	21.72	4.0	3.88	8.06
2.50"	6.00	14.47	5.75	21.72	4.0	3.88	8.06
2.88"	6.00	14.47	5.75	21.72	4.0	3.88	8.06
3.00"	6.00	14.63	5.88	21.88	4.0	5.00	8.06
3.50"	7.00	18.62	7.87	27.87	4.0	5.00	12.06
4.00"	7.00	18.62	7.87	27.87	6.0	5.50	8.06
4.50"	9.00	21.06	8.50	30.81	6.0	5.50	10.06
5.00"	9.00	23.25	10.16	34.00	8.0	6.50	10.06
5.56"	9.00	23.25	10.16	34.00	8.0	6.50	10.06
6.00"	10.00	25.06	11.13	35.56	8.0	7.50	10.06
6.63"	10.00	26.78	12.00	38.78	8.0	7.50	14.06
8.00"	12.00	31.06	14.13	44.56	8.0	9.50	18.06
8.63"	12.00	31.69	14.44	45.19	8.0	9.50	18.06
10.00"	14.00	37.56	17.38	53.06	8.0	11.50	18.06
10.75"	16.00	44.47	21.00	60.97	8.0	11.50	18.06
12.00"	16.00	44.72	21.00	62.22	12.0	13.81	18.06
12.75"	16.00	46.72	22.00	65.22	12.0	13.81	18.06
14.00"	18.00	50.25	23.78	69.75	12.0	16.00	18.06

Tube & Pipe Stubs

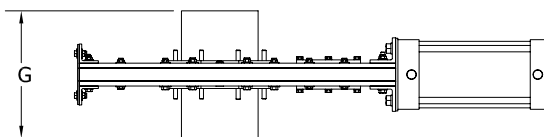
TUBE & PIPE STUBS FOR COMPRESSION COUPLINGS

Lightweight Stud Pattern

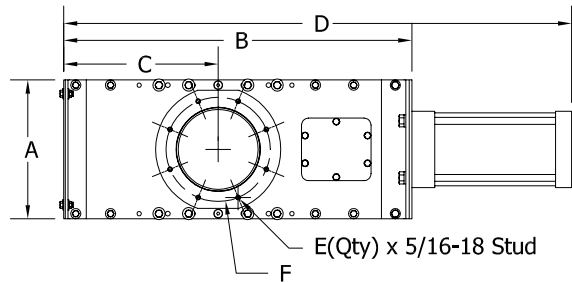
TPS Top view



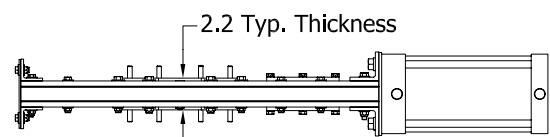
TPS Side view



LSP Top view



LSP Side view



Slide Gates Series E

SB



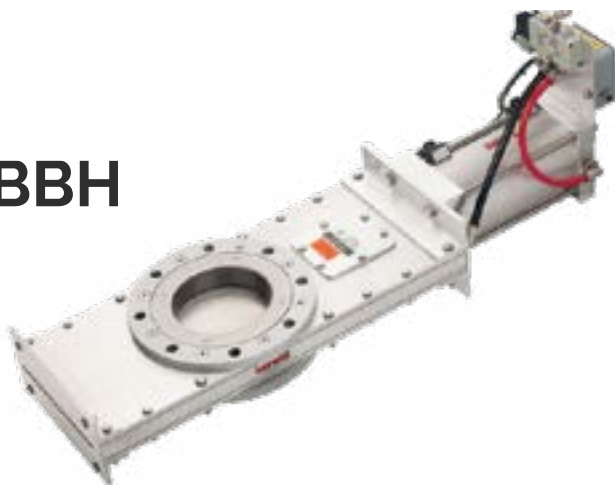
STUD BOLT [SBI]

BTV



BOLT THROUGH VALVE [BTV]

BBH



BLIND BOLT HOLE [BBH]

Standard Features

- Shut off dry bulk conveying lines under vacuum, pressure (dilute phase 15 psi max) or gravity
- Unobstructed flow improves system performance and eliminates product degradation
- Install horizontally or vertically allowing simple system design (vacuum or pressure lines only)
- Positive Blade Lock (PBL) between blade & cylinder rod
- Internal magnetic piston, cushioned air cylinder
- Polished Stainless Steel blade
- Active Compression Seals (ACS)
- Light weight Aluminum body construction
- Temperature rated for up to 82° C (180° F)
- Fully tested prior to shipping

Options

- Position switches 5 volt to 240 volt AC/DC
- Special Seal Configurations
- Proximity Switches
- Oversized cylinders
- Double Acting or Single Acting Spring Return Solenoid (110 volt AC or 24 volt DC) or Manual Lever Valve
- Valve body sealed for air purging when conveying powders
- High temperature modifications
- NEMA 7-9 hazardous locations
- Manual Hand Crank, Hand Wheel, Chain Wheel Operation
- Electric Actuation
- Special Service Inlet
- Pre-wired Terminal Boxes
- Mufflers (Flow Control or Quick Exhaust)
- Vented Ball Valve (safety feature)
- Filter/Regulator/Lubricator
- Variable/Infinite Position Controls

STUD BOLT [SBI] - 150lb. pipe flange pattern with studs for bolting to flanges.

BLIND BOLT HOLE [BBH] - 150lb. pipe flange pattern with tapped holes for mounting between flanges.

Lorenz
Conveying Products

CANADA 1-800-263-1942 USA 1-800-263-7782
P.O. Box 1002 Cobourg, Ontario K9A 4W4, Canada

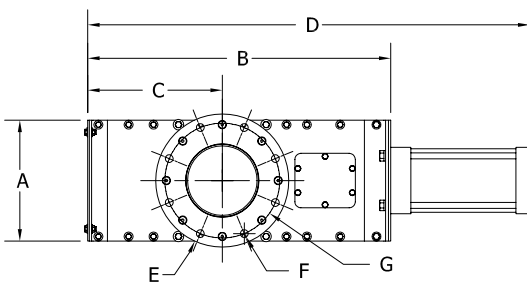
www.lorenzproducts.com

Slide Gates

BBH/SB/BTV

SIZE	A	B	C	D	E	F	G	H	I	J
1.5"	5.00	11.75	4.69	17.97	5.00	4x1/2-13	3.88	3.10	4.63	2 x 0.44
2"	5.00	11.72	4.69	17.97	6.00	4x5/8-11	4.75	3.10	5.50	2 x 0.44
2.25"	6.00	14.47	5.75	21.72	6.00	4x5/8-11	4.75	3.10	5.50	2 x 0.44
2.375"	6.00	14.47	5.75	21.72	6.00	4x5/8-11	4.75	3.10	5.50	2 x 0.44
2.5"	6.00	14.47	5.75	21.72	7.00	4x5/8-11	5.50	3.10	6.25	2 x 0.44
2.875"	6.00	14.47	5.75	21.72	7.00	4x5/8-11	5.50	3.10	6.25	2 x 0.44
3"	6.00	14.63	5.88	21.88	7.50	4x5/8-11	6.00	3.10	6.75	2 x 0.44
3.5"	7.00	18.62	7.87	27.87	7.50	4x5/8-11	6.00	3.10	6.75	2 x 0.44
4"	7.00	18.62	7.87	27.87	9.00	8x5/8-11	7.50	3.10	7.50	4 x 0.44
4.5"	9.00	21.06	8.50	30.81	9.00	8x5/8-11	7.50	3.10	7.50	4 x 0.56
5"	9.00	23.25	10.16	34.00	10.00	8x3/4-10	8.50	3.10	9.00	4 x 0.56
5.563"	9.00	23.25	10.16	34.00	10.00	8x3/4-10	8.50	3.10	9.00	4 x 0.56
6"	10.00	25.06	11.13	35.56	11.00	8x3/4-10	9.50	3.10	10.00	4 x 0.56
6.625"	10.00	26.78	12.00	38.78	11.00	8x3/4-10	9.50	3.10	10.00	4 x 0.56
8"	12.00	31.06	14.13	44.56	13.50	8x3/4-10	11.75	3.10	12.00	4 x 0.56
8.625"	12.00	31.69	14.44	45.19	13.50	8x3/4-10	11.75	3.10	12.00	4 x 0.56
10"	14.00	37.56	17.38	53.06	16.00	12x3/4-10	14.25	3.31	14.75	4 x 0.56
10.75"	16.00	44.47	21.00	60.97	16.00	12x3/4-10	14.25	3.31	14.75	4 x 0.56
12"	16.00	44.72	21.00	62.22	19.00	12x7/8-9	17.00	3.31	17.50	4 x 0.56
12.75"	16.00	46.72	22.00	65.22	19.00	12x7/8-9	17.00	3.31	17.50	4 x 0.56
14"	18.00	50.25	23.78	69.75	21.00	12x1-8	18.75	3.31	19.00	4 x 0.56

Stud Bolt & Blind Bolt Hole

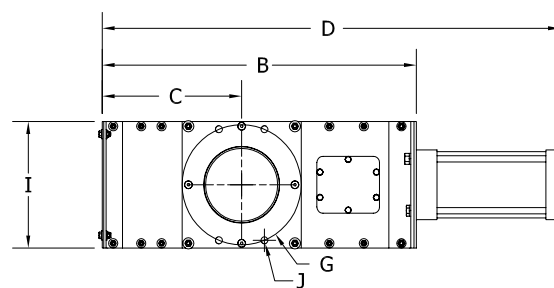


SB & BBH
Top view

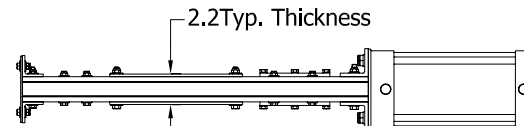


SB & BBH
Side view

Bolt Through Valve



BTV
Top view



BTV
Side view