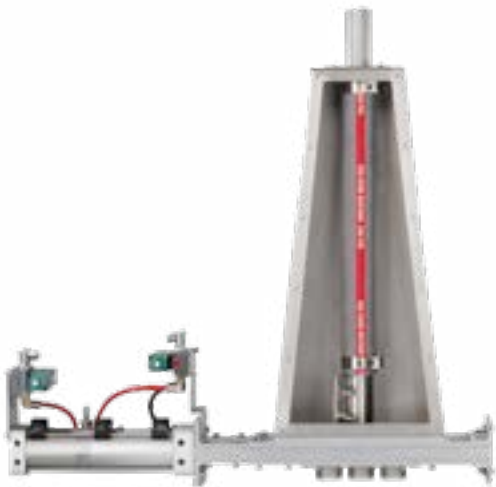


# 2 & 3 Way Slideflex Diverter Valves Series P



2 WAY SLIDEFLEX DIVERTER VALVES



3 WAY SLIDEFLEX DIVERTER VALVES

Available in sizes  
from 2" up to 8" OD

## Standard Features

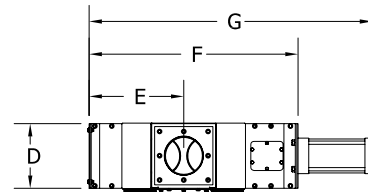
- Eliminate product cross contamination
- Manufactured for vacuum or dilute phase (15 psi max) pneumatic conveying systems
- Unobstructed flow improves system performance and eliminates product degradation
- Install horizontally or vertically allowing simple system design
- Stainless Steel Inlet/Outlets standard
- Oversized cylinders
- Positive Blade Lock (PBL) between blade & cylinder rod
- Internal magnetic piston, cushioned air cylinder
- Polished Stainless Steel blade
- Active Compression Seals (ACS)
- Light weight Aluminum body construction
- Temperature rated for up to 82° C (180° F)
- Inlet/Outlet wall thickness of 16, 14 & 11 gauge, schedule 10, 40 & 80
- Fully tested prior to shipping

## Options

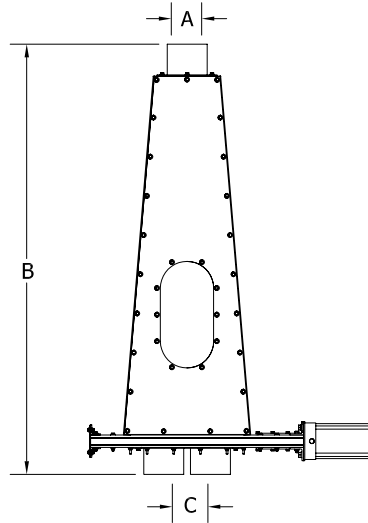
- Position switches 5 volt to 240 volt AC/DC
- Manual Hand Crank, Hand Wheel, Chain Wheel Operation
- Proximity Switches
- Inlets/Outlets - Aluminum, Carbon Steel or Stainless Steel with straight or flanged ends
- High temperature modifications
- Electric Actuation
- NEMA 7-9 hazardous locations
- Stainless Steel Hose (maximum 6")
- Double Acting or Single Acting Spring Return Solenoid (110 volt AC or 24 volt DC) or Manual Lever Valve
- Pre-wired Terminal Boxes
- Vented Ball Valve (safety feature)
- Filter/Regulator/Lubricator
- Mufflers (Flow Control or Quick Exhaust)

# 2 Way Slideflex Valve

A (OD)	B	C	D	E	F	G
2"	34.33	2.50	5.00	5.82	14.19	20.94
2.25	39.25	3.50	6.00	7.65	18.38	26.13
2.375"	39.25	3.50	6.00	7.65	18.38	26.13
2.5"	39.13	3.50	6.00	7.66	18.38	26.13
2.875"	39.18	3.50	6.00	7.73	18.38	26.13
3"	39.50	3.50	6.00	7.72	18.38	26.13
3.5"	48.06	5.00	7.00	10.43	23.63	32.88
4"	48.06	5.00	7.00	10.43	23.63	32.88
4.5"	52.90	6.00	9.00	12.89	28.56	39.06
5"	53.02	6.00	9.00	12.91	28.56	39.06
5.5625"	65.14	7.00	10.00	14.64	32.31	43.81
6"	64.65	7.00	10.00	14.60	32.31	43.81
6.625"	75.18	10.00	11.00	21.47	44.90	59.44
8"	77.37	10.00	12.00	20.81	44.31	58.81



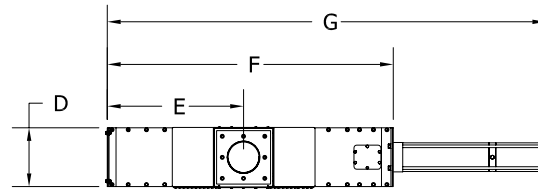
SF2  
Top view



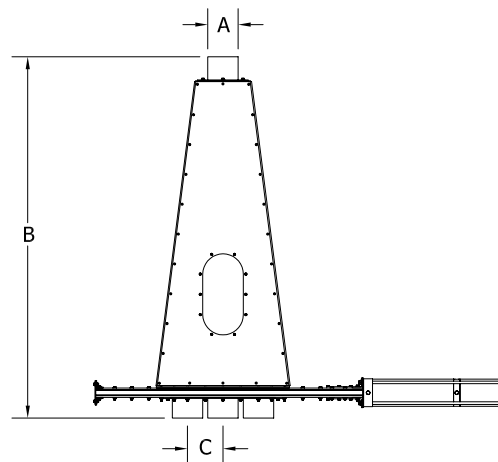
SF2  
Side view

# 3 Way Slideflex Valve

A (OD)	B	C	D	E	F	G
2"	38.21	2.50	6.00	10.00	22.88	37.13
2.25"	49.21	3.50	7.00	13.03	28.69	45.94
2.375"	49.21	3.50	7.00	13.03	28.69	45.94
2.5"	49.21	3.50	7.00	13.03	28.69	45.94
2.875"	48.21	3.50	7.00	12.97	28.69	45.94
3"	48.21	3.50	7.00	12.97	28.68	45.94
3.5"	59.77	5.00	9.00	18.77	40.19	62.44
4"	58.27	5.00	9.00	18.77	40.19	62.44
4.5"	66.12	6.00	9.00	22.02	46.69	71.94
5"	65.12	6.00	9.00	22.02	46.69	71.94
5.5625"	72.18	7.00	11.00	25.25	53.02	81.27
6"	71.31	7.00	11.00	25.25	53.02	81.27
6.625"	87.94	7.25	11.00	25.31	53.81	82.81
8"	86.87	10.00	12.00	35.86	74.25	112.25



SF3  
Top view



SF3  
Side view